



# Ngāti Hauā --- Iwi Trust

Report to Ngāti Haua Hui a Iwi

Sunday 22 June 2014

Waimakariri Marae

# Ngati Haua Iwi Trust Update Report



# Key Developments - Progress

## Post 18 July 2013 DoS Signing

- On Account Settlement Cash received (\$6.5m held in Term Deposit – 4.05%)
- On Account Interest received (\$193,219.18c)
- Cultural Redress (\$178k) Payment received
- Tawhara Kai Atua payment made – 30 October 2013
- 1199 Maungakawa Rd, Former Mangateparu School, 72 and 80 Firth St transferred to Ngati Haua ownership
- 53 Firth St – cash-out option taken (\$280k) due to possible contamination issues arising out of due diligence process
- Property management systems established and rentals received

# Key Developments - Progress

## Post 18 July 2013 DoS Signing

- Te Waharoa Investments established with approved SIPO (November 2013)
- Shareholders Agreement & Dividend Policy – in progress
- Tumuaki Support Fund ongoing – supporting Tumuaki operations until legislation
- Kahui Kaumatua established with ongoing bi-monthly hui
- Planning sub-committee established for annual Ngati Haua Festival – commencing Labour Weekend 2015
- Tumuaki Accord – initial meetings held, further progress delayed due to political climate/priorities.
- Te Kauwhanganui Relationship Agreement Inaugural Hui with Crown agencies (Te Papa, Archives, Heritage NZ, National Library) – 19 June 2014

# Legislation Update

- Ngati Haua Claims Settlement Bill was finalised for introduction into House of Representatives - October 2013
- First Reading – 23 October 2013; Select Committee Hearings Jan 2014
- Second Reading – 8 May 2014
- Final Reading – Date To Be Confirmed – Possibly end July 2014
- Preparations (Travel/Bus & Accommodation) in progress
- A maximum of 90 people can be allowed for in the gallery on the day; preparations are being made with this in mind.
- 15 spaces per marae
- We will advise as soon as a date is confirmed



# Audit & AGM Update

- Planning is underway in terms of preparing the Annual Plan and Budget for the 2014-15 period
- Audit of Financial Statements – mid July 2014
- AGM – 31 August 2014 – Details (time/venue) to be confirmed
- Key agenda items:
  - Present Annual Report and Audited Financial Statements;
  - Present proposed Annual Plan for 2014-15;
  - Approve the appointment of the Auditor for the next Income Year;
  - Approve Trustees remuneration

# Upcoming Wananga

- Winter Wananga – schedule soon to be confirmed and wananga held in July/August
- Kaupapa: Ngati Haua whakapapa, tikanga, history, reo, waiata
- Kaumatua Wananga: Sunday 29<sup>th</sup> June 2014, 10am-5pm, Te Wharekura o te Rau Aroha
- Rangatahi Wananga – 9<sup>th</sup> & 10<sup>th</sup> August, Raungaiti Marae

# Lincoln Farm Training Opportunity

- Background: MOU between Ngati Hava, NKK and Lincoln University signed in July 2013 for the purpose of exploring opportunities around establishing a pilot farm-training initiative located on NKK and NH lands in the North Island.
- One of the objectives was that parties would actively explore and identify educational opportunities, and in particular, actively recruit students who are descendants of NKK and NH for the Project.
- A training site is yet to be established in the NH/NKK rohe, therefore an alternative opportunity has been offered in the interim.
- 3 spaces in total are available for NH/NKK people who are 18-34 years of age, completed three years of secondary schooling and has NCEA Level 1
- Commences 21 July 2014
- Full fee and accommodation (at Lincoln Campus) scholarships
- Please see Lisa for further information/application forms





### Qualification

Certificate in Farming (Dairy) – Level 3.

### Duration

One academic year—37 weeks, commencing in July 2014.

### What are the entry requirements?

If you are between 18 and 34 years and have completed at least three years of secondary school and achieved NCEA Level 1 or equivalent. There must be a reasonable likelihood of success at Level 3, including the physical ability to manage the work without putting others at risk, and an adequate level of literacy and numeracy skills.

### What will the cost be?

If you meet the entry criteria full fees scholarships are available to support you through your Lincoln University studies.

### Accommodation

On the Lincoln campus.

### Want More Information?

Visit [www.whenuakura.co.nz](http://www.whenuakura.co.nz) and download an enrolment form.

## Work on the whānau farm

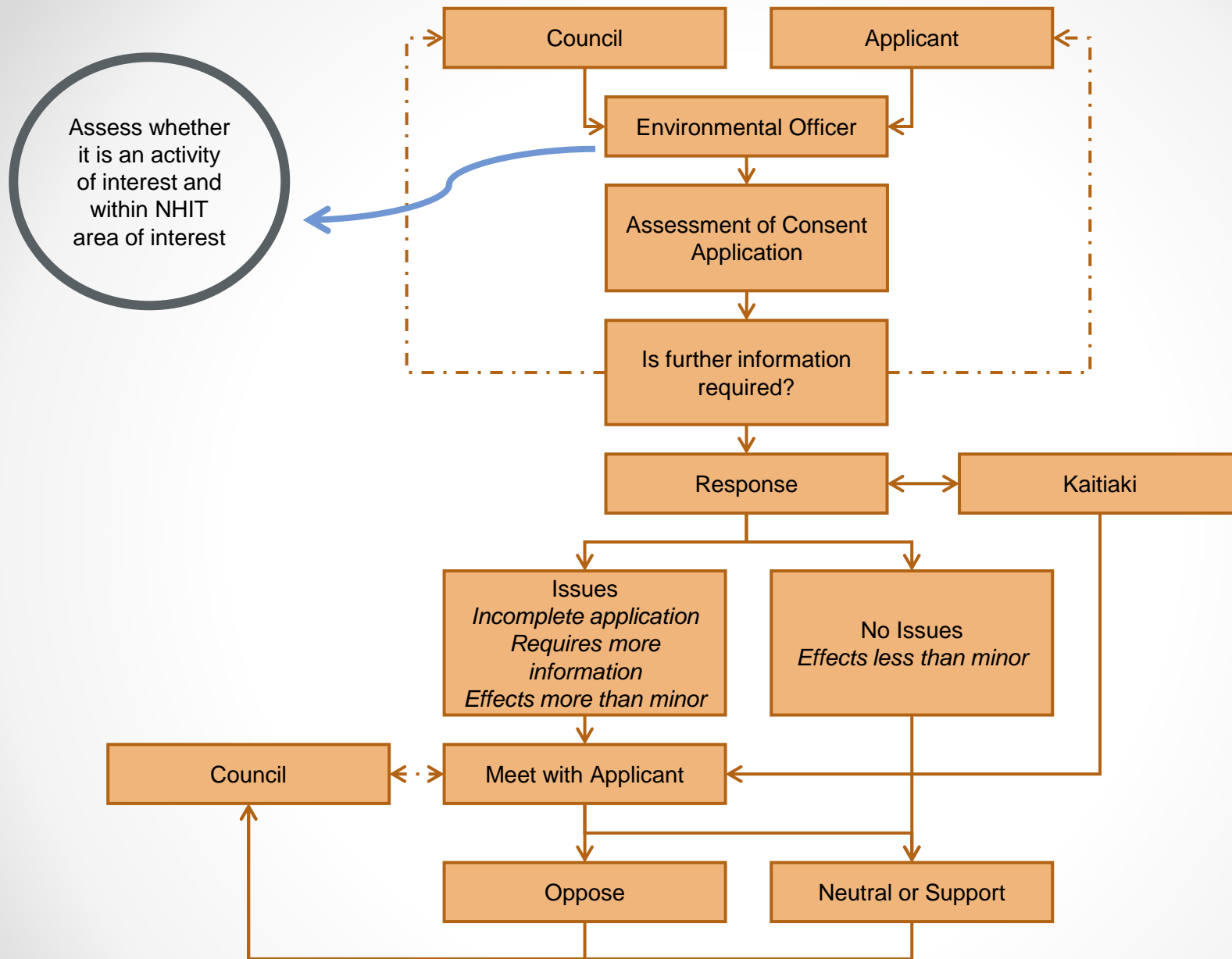
*More Māori are needed to work in agriculture. You can learn how to apply Māori values to the land and lead the way in best practice farming.*



# Environmental Update

- Shadrach Rolleston and Jess Samuels appointed March 2014 to work in conjunction with marae appointed kaitiaki a rohe
- Key role and function – to provide technical support to kaitiaki
- Kaitiaki a Rohe Training/Induction Programme – 14 April 2014
- Consent Process finalised and implemented
- Engagement with local authorities – May/June 2014 & ongoing
- Engagement with Ngati Koroki Kahukura on shared matters – May 2014 & ongoing with the development of Te Ropu Whaiti & a Joint Technical Environment Komiti





# Local Authority Engagement

- Focus on developing meaningful long term relationships with local authorities
- Introduce the governors and operations teams
- Update local authorities on activities since Settlement
- Orientate local authorities with NHIT governance and operations structures
- Overview of NHIT operational process dealing with environmental issues

**Waikato District Council – Mayor, Councillors, Chief Executive and Council staff**

**Waikato Regional Council – Chairperson, Councillors, Chief Executive and Council staff**

**Matamata Piako District Council – Mayor, Chief Executive and Council staff**

**Hamilton City Council – Deputy Mayor, Council staff**

**Waipa District Council – TBC**

# Consents Update

- **Sundale Farms Ltd**

- Take water from the Waitoa River
- Lodged a neutral submission requesting monitoring data

- **Silver fern farms resource consent application**

- To discharge treated waste to Waihou River
- Application didn't adequately assess NHIT cultural issues
- NHIT lodged a submission opposing the application

- **Pukeatua Quarry**

- Quarrying extension in Pukeatua and possible impact on Hangahanga Pa site
- Joint KK, Raukawa & Haua submission opposing application
- Iwi groups met with applicant - awaiting further information

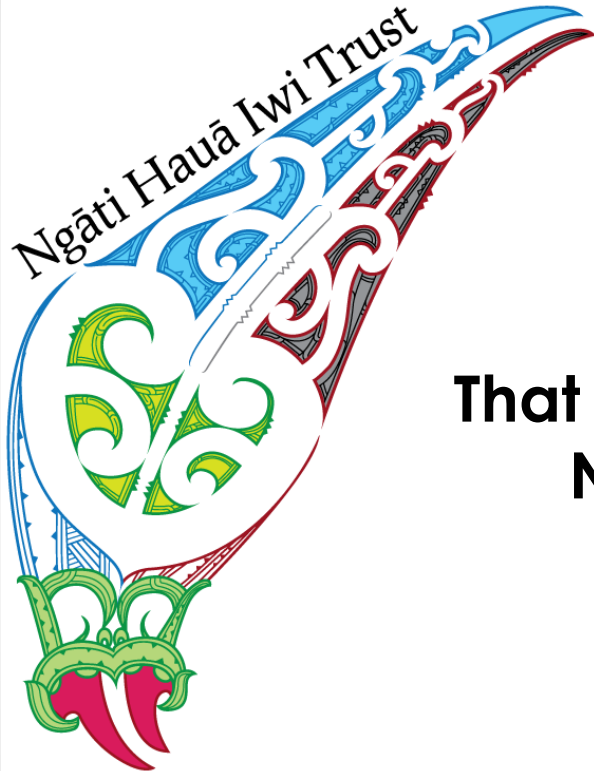


# Consents Update

- **Maungakawa and Te Miro scenic reserve pest control projects**
  - Regional Council acknowledged NHIT ownership of the reserve
  - NHIT included in discussions around management of pests in these scenic reserves
  - Lodged a neutral submission requesting monitoring data
- **Waikato Conservation Management Strategy**
  - NHIT has been asked to review this document to ensure it adequately addresses our interests
- **Potuwaha Pa Restoration (Tamahere)**
  - Kaitiaki – Wakataua has been involved in the restoration of this pa site in partnership with Waikato District Council
  - Intention is to recreate and restore traditional pa site



# Resolution



**That the Ngāti Haua Hui a Iwi Receive the  
NHIT Progress Report 22 June 2014**

# CONTACT DETAILS

Ngāti Hauā Iwi Trust Office  
33 Studholme St  
Morrinsville

Phone: 07 889 5049 or 0800 895 049

Email: [admin@ngatihauaiwitrust.co.nz](mailto:admin@ngatihauaiwitrust.co.nz)

Website: [www.ngatihauaiwitrust.co.nz](http://www.ngatihauaiwitrust.co.nz)

Facebook: <https://www.facebook.com/NgatiHauaiwiTrust>

## BOARD MATTERS

Lance Rapana

[lance.rapana1840@gmail.com](mailto:lance.rapana1840@gmail.com)

0274138706

Mokoro Gillett

[mokoro.gillett@gmail.com](mailto:mokoro.gillett@gmail.com)

Mobile: 0274885113

## MANAGEMENT ISSUES

Lisa Gardiner

[lisa@ngatihauaiwitrust.co.nz](mailto:lisa@ngatihauaiwitrust.co.nz)

Mobile: 021764133