



Report to Ngāti Haua Hui a Iwi – 13 October 2013

Kai a te Mata Marae

Ngati Haua Iwi Trust

- **Co-Chairs**

Lance Rapana & Mokoro Gillett

- **Trustees**

Linda Raupita

Adam Whauwhau

Mitch Rakatau

Te Ao Marama Maaka

Rangitonga Kaukau

Bob Penetito

- **Management Team**

General Manager

Operations Manager

Office Administrator

Information

NHIT Secretariat

Lisa Gardiner

Muna Wharawhara

Piki Marsh

Kiley Diamond

Delia Wilson

**Te pae tawhiti, whakamaua kia tata
Te pae tata, whakamaua kia tina!**

Ngati Haua Iwi Trust Strategic Plan

SNAPSHOT OF NGATI HAUA IWI TRUST STRATEGIC PLAN

VISION (What we aspire to)

“Kia pono ai te korero, he Iwi rangātira tatou nō mua iho, naiānei, ā, mō ake tonu”
To restore the belief that ‘We are a noble and self sustaining people, from days past, today and forevermore’

MISSION (How we will achieve our vision)

To protect, manage and grow our Ngati Haua resources to support Kingitanga, Tumuakitanga and grow the overall well being of Ngati Haua

FIVE STRATEGIC OBJECTIVES – Refer to attachment

1. Kia pono
2. Kia kotahi
3. Kia tu rangatira
4. Hei kaitiaki
5. Kia puawai nga moemoea

1. **Operations: Whakaoti te mahi, kia tika – Complete the settlement**

1. Complete the enactment of the **Ngati Hava Claims Settlement Act 2014**
2. Complete the **redress transfer** (cash, properties & rights) from the Crown to NHIT.

2. **Economic: He kai kei aku ringa - Economically Independent**

1. Establish **Te Waharoa Investments** with approved constitution, shareholders agreement, SIPO and dividends policy.

3. **Cultural: Ko te Kingitanga ko te Tumuakitanga – he kotahi: Strong Kingitanga, strong Tumuakitanga, strong Ngati**

1. Establish the **Tumuaki Endowment** fund with an approved budget and supports for the Tumuaki.
2. Establish **Tumuaki Accord** with a united Ngati Hava focus on how the aspirations of Ngati Hava providers can be supported through government support.
3. Establish and resource the **Kahui Kaumatua** o Ngati Hava in partnership with other Ngati Hava providers.
4. Fund a Ngati Hava **Rangatahi** wananga for rangatahi to confirm their aspirations.
5. Confirm with rangatahi the key initiatives in their plan to be funded by NHIT.
6. Transfer shares in TWI to each Ngati Hava **marae entity** and ongoing dividends.
7. Confirm the plan and commitment for the strengthening of **Te Kauwhanganui o Mahuta** using the NHIT \$1m plus other sourced funds.

4. **Environmental: Toitu te marae a Tane, Toitu a Ngati Hava - Sustainability**

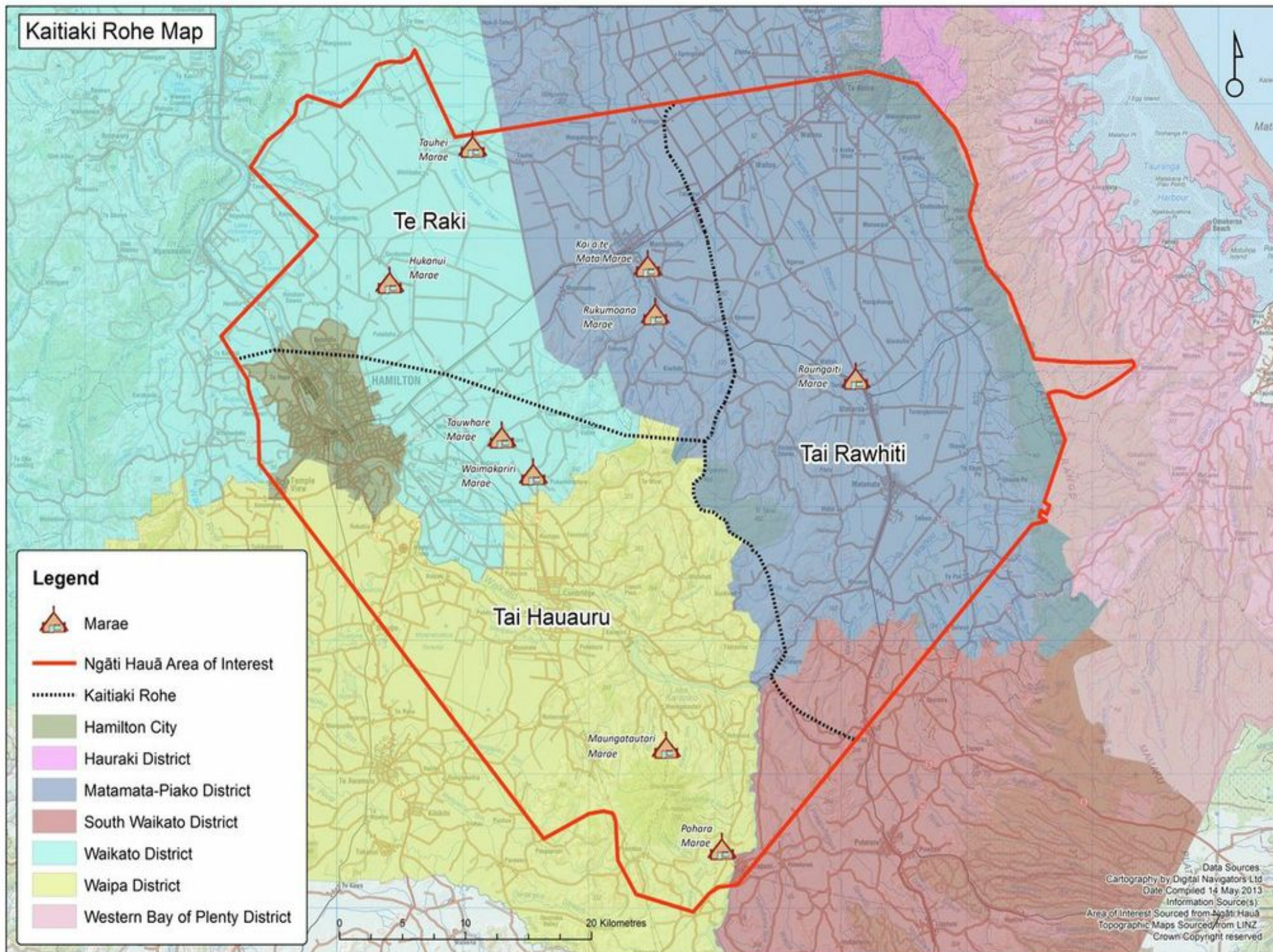
1. Receive the **Maungakawa** title with concessions;
2. Participate in the **Waikato River** Co Management;
3. Confirm a plan with Councils and DOC to ensure that our **kaitiaki are resourced** to fulfil their kaitiaki obligations to the tribally managed environment resources.

NHIT Budget July 2013 – June 2014

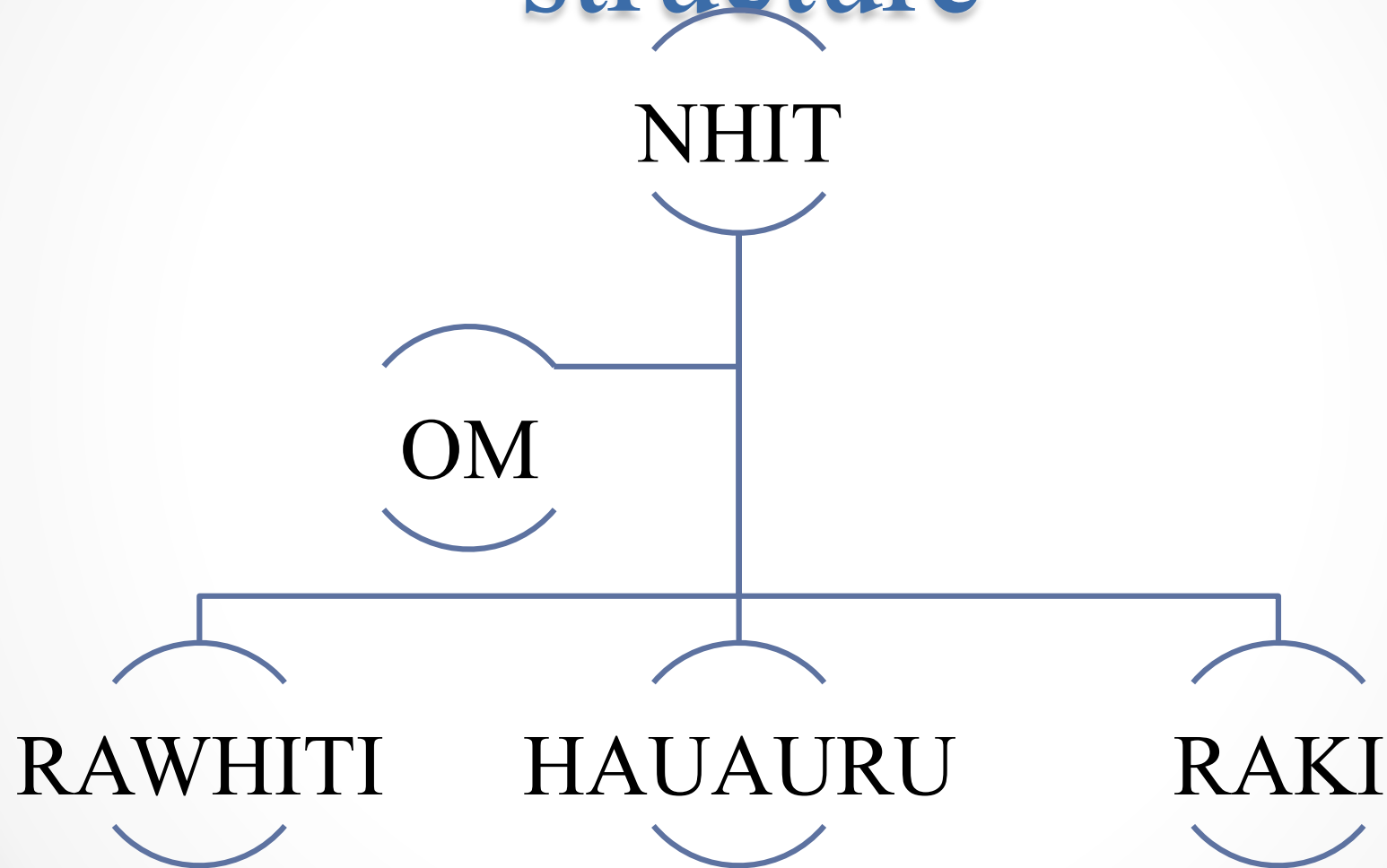
| | |
|---|------------------|
| INCOME (On-Account Interest, Unspent NHTB Funds, External Funding) | \$443,219 |
| EXPENSES | |
| General Operating Expenses (Rent, Office Overheads, Trustees Liability Insurance, Travel) | \$108,494 |
| Staff/Contracted Services – Management, Administration & Information Services (Five Positions) | \$131,481 |
| Governance Fees (Co-Chairs & Trustees) | \$23,600 |
| Governance Training | \$16,000 |
| Professional Services (Legal, Accounting, Audit, Taxation etc) | \$61,000 |
| Communications (Panui/Newsletters, Hui a Iwi) | \$7,800 |
| Kahui Kaumatua/Tumuaki Support Fund/Rangatahi | \$28,000 |
| TOTAL | \$376,575 |

- **Note: Surplus of \$66.5k (in addition of \$33.5k TWI surplus) to be used to fund Tawhara Kai Atua** ●

Kaitiaki Rohe Map



Kaitiaki-a-rohe leadership structure



Kaitiaki-a-rohe

role and responsibilities

- Represents the interest of Ngati Haua in all environmental matters within their respective kaitiaki boundary under the leadership and direction of Ngati Haua Iwi Trust.
- Provides local responses to environmental issues within their kaitiaki boundary
- Role will include;
 - ✓ Completing resource consents
 - ✓ Attending meetings
 - ✓ Submitting verbal/written update reports to marae, NHIT and hui-a-iwi
 - ✓ Promotion of Ngati Haua Environmental strategy/management plan
 - ✓ Developing and maintaining local relationships
- All marae elected kaitiaki-a-rohe representatives are responsible to the NHIT Operations manager who manages all strategic relationships and work streams including the Ngati Haua Environmental strategy and goals.

Ngāti Hauā kaitiaki-ā-rohe

- Nominated and elected by marae for a term of no less than 3 years.
- A copy of marae minutes validating election process and elected person must be forwarded to Ngati Haua Iwi Trust by each of the marae
- Represents the interest of Ngati Haua whanui within their described rohe boundary under the leadership of Ngati Haua Iwi Trust.
- Must have good verbal and communication skills as the role includes report writing and attending meetings
- Is familiar with the Resource Management Act
- Has access to email and is contactable via mobile, landline
- Are responsible to NHIT Operations Manager

Te Kahui Kaumatua o Haua

- Each marae is entitled to appoint one koroua and one kuia to this council of elders whose numbers should not exceed ten in total.
- **PURPOSE**
- Te Kāhui Kaumatua o Hauā shall be responsible for protecting the Mauri of Ngāti Hauā and facilitating the resolution of any disputes that may arise in connection with the Trust or any part of the Ngāti Hauā Group regarding the tikanga, reo, kawa and kōrero of Ngāti Hauā.
- In addition to protecting the Mauri of Ngāti Hauā, Te Kāhui Kaumatua o Hauā shall advise the Trustees on matters involving Ngāti Hauā tikanga, reo, kawa and kōrero.
- **A NHIT Trustee may not be a member of Te Kahui Kaumatua o Haua.**
- Appointees to Te Kāhui Kaumatua o Hauā shall be Members of Ngāti Hauā who are of good standing and who are knowledgeable of Ngāti Hauā tikanga, reo, kawa and kōrero.

Resolutions

That the Ngati Haua Hui a Iwi endorse the following;

- 1. The NHIT Report (13th October 2013)**
- 2. The NHIT 5 year Strategic Plan**
- 3. The NHIT Annual Plan inclusive of budgets**

CONTACT DETAILS

Ngāti Hauā Iwi Trust Office

33 Studholme St

Morrinsville

Phone: 07 889 5049 or 0800 895 049

Email: admin@ngatihauaiwitrust.co.nz

Website: www.ngatihauaiwitrust.co.nz

Facebook: <https://www.facebook.com/NgatiHauaiwiTrust>

BOARD MATTERS

Lance Rapana

lance.rapana1840@gmail.com

0274138706

Mokoro Gillett

mokoro.gillett@gmail.com

Mobile: 0274885113

NEGOTIATIONS & MANAGEMENT ISSUES

Lisa Gardiner

lisa@ngatihauaiwitrust.co.nz

Mobile: 021764133