



Ngāti Hauā

Iwi Trust

HUI A IWI REPORT
Sunday 28th October 2018
Kai a Te Mata Marae

Environmental Update

- **Te Rautaki Tamata Ao Turoa o Haua**

Our Environmental Management Plan has now been finalised and it can be accessed on our website

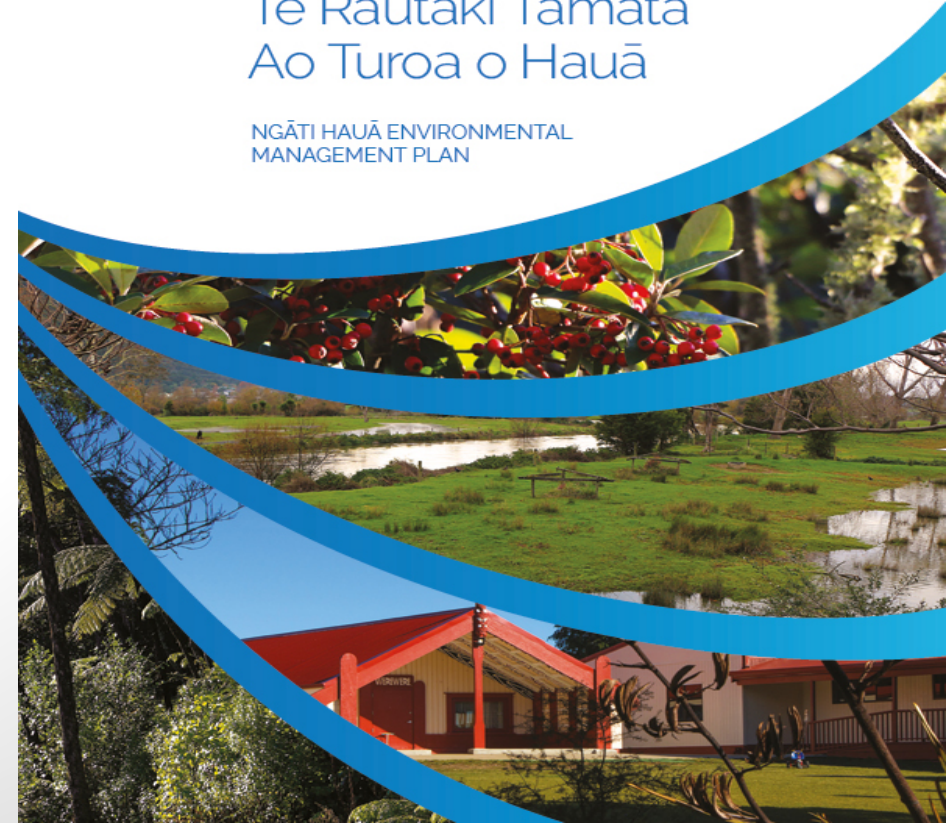
<https://ngatihauaiwitrust.co.nz/publications/trust-documents/>

- Workshops with Council (policy and planning staff) and kaitiaki a rohe are being planned for early 2019



Te Rautaki Tāmata
Ao Turoa o Hauā

NGĀTI HAUĀ ENVIRONMENTAL
MANAGEMENT PLAN



RMA & Consenting Updates

■ Matamata Metal Supplies

- Matamata Metal Supplies Ltd is a quarry operation located at the end of Barton Road, Okauia, Matamata. This site is located on the western side of the Kaimai ranges, North of the SH29 to Tauranga. The quarry has been in operation continuously since the 1950's but now has consents expiring. MMS are now renewing and obtaining resource consents for the existing quarry operation from the Waikato Regional Council. The proposal is essentially to continue operations as they have been undertaken for some time. This includes some natural expansion of the pit and overburden disposal areas, take of surface water and discharge of stormwater.
- NHIT have opposed the applications in its entirety, for the following reasons:
- fails to meet the Ngāti Hauā Iwi Trusts Rautaki Taiao Environmental Framework, with particular regard to the sacred maunga Te Weraiti, the protection of the mauri, water quality and ecology the Mangapiko catchment
- Inadequate recognition of our values, interests and relationship with our marae, ancestral lands and the mitigation recommendations do not adequately avoid, remedy or mitigate the adverse cultural and environmental effects
- The duration of consent sought
- **An Environment Court Hearing is scheduled for 12-13 November 2018**

RMA & Consenting Updates

■ Regal Haulage

- Regal Haulage Limited requires a replacement resource consent permit to discharge truck wash wastewater in association with the operation of an existing truck depot located at 651 Airport Road, Tamahere. A Cultural Values Assessment was commissioned and will assist Regal Limited to better understand Ngāti Hauā's current cultural values and impacts associated with the proposed wastewater upgrade/development at the site in Tamahere, and where applicable have provision for cultural and environmental mitigation aligned to the Mangaone, Mangaonua Catchment Management Strategy, which is led by Ngāti Hauā Mahi Trust.
- The key focus was to ensure that the mauri – cultural well-being of the receiving environment benefits from any proposed upgrade and to ensure that no further degradation of the Mangaone and Mangaonua water systems occurs.

RMA & Consenting Updates

- **Fonterra Hautapu**
- Fonterra is seeking resource consents to authorise the diversion of groundwater and the continued discharge of stormwater to the Mangaone Stream following the expiry of Resource Consent 930685).
- A draft CIA was commissioned and completed in September 2018 by Boffa Miskell.
- Workshops were held with Te Iti o Haua Marae and Waimakariri Marae in early October 2018 to discuss the CIA and mitigation recommendations.
- Mitigation recommendations includes but not limited to:
 - Establishment of a statutory mechanism to monitor the wastewater scheme for the duration of the consents
 - Accidental discovery protocols and cultural monitors
 - Indigenous placemaking: landscaping, pou, signage that reflects Ngati Haua
 - Environmental Mitigation and Enhancement Fund
 - Capacity building i.e scholarships

RMA & Consenting Updates

- **Tatua**

- PC 52 – Tatua Dairy Company Development Concept Plan – to amend the DCP for the Tatua milk processing facility to ensure alignment with its existing resource consents and to provide for the operation and potential expansion of the facility
- Position statement commissioned and completed with similar recommendations as proposed for the Fonterra Hautapu site

- **Open Country Dairy**

- Open County Dairy, Waharoa Plan Change 51 seeks a Development Concept Plan (DCP) for the Open Country Dairy milk processing site in Factory Road, Waharoa. The purpose of the DCP is to provide for the integrated and coordinated development of the Open Country Dairy site, in advance of its current resource consents, to allow for additional growth and development of the milk processing facility.
- Position statement commissioned and completed
- Advocacy and support in relation to the prosecution over breaches of the RMA due to objectionable odour

RMA & Consenting Updates

- **Transpower**

- Transpower are considering building a new sub-station at Morrinsville, exact location and details are still being worked through. Transpower have initiated early engagement with Ngati Haua on this matter.

- **Riverside Golf Club/Lochiel Golf Club**

- These two golf clubs are merging due to the new Waikato Expressway. The owners wish to develop and extend the golf course situated at Mystery Creek and have requested Ngāti Hauā input into design principles and values being embedded.
- **We have requested that a CIA be commissioned to deal specifically with the cultural and environmental values**

Ruakura Inland Port - Update

- The Inland Port is expected to open end 2020/start 2021.
- Draft wetland designs tabled at meeting on 23/8/18
- Designs are based on korero provided at kaumatua wananga held in July 2018.
- TGH are still in process of securing anchor tenant and should have confirmation in November 2018.
- TGH have appointed a new Project Director Alan McKinnion to assist with the complex consenting processes and the construction projects which are estimated to cost \$30-\$40m.
- An application has been submitted to DoC to request a Wildlife Act Authority which is required due to tree felling that will need to be undertaken and a need to protect any wildlife in particular bats.
- Wetland earthworks – during geotechnical investigations, a significant amount of rubbish and refuse was found beneath the area where the wetland will be located. It is not contaminated but it is refuse. Options to address are currently being considered.

‘RUAKURA IS NAMED AFTER A PIT IN THE AREA THAT WAS USED TO BURN IRON OXIDE’.

‘Traditionally, large pieces of iron oxide found in swamps were heated, by burning in a fire, to produce a powdery red pigment. This was mixed with water to produce the sacred red Kokowai (ochre) which was used for painted tapu ceremonial objects, koiwi and carvings. Burning the red oxide stained the pit red thereby giving rise to the name Rua (hole or pit) kura (red)’.

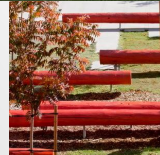
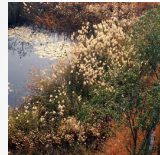
**Source: An Assessment of the Potential Impact that any expansion and development of the Ruakura Estate might have on Cultural Values and Mana Whenua
by NaMTOK Consultancy Ltd (November 2011)**

"The regional landscape is flat and was once rich in wetlands and salt marshes, which had been mostly destroyed by decades of urban development and infrastructure construction. Inspired by the adaptive vegetation communities that dotted the landscape in this region, the solution for this park was developed called The Adaptation Palettes, which was designed to let the naturework'.

Sources: <https://www.landolines.com/index.php/2011/03/tianjin-qiaoyuan-park-by-turenscape-landscape-architecture/>

Tianjin Qiaoyuan Park — by Turenscape Landscape Architecture

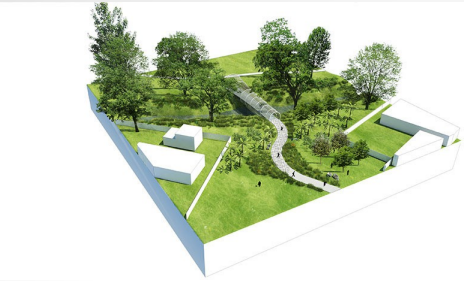
Northumberlandia Newcastle, England



Northumberlandia Newcastle, England



University of California, Irvine Contemporary Arts Centre — by Ehrlich Yonai Rhee Chaney Architects



Boffa Miskell landscape architects worked with mana whenua to develop a concept design for the Hinaki Bridge, which draws reference to the woven flax eel traps used by Māori in the creek.

Source: <http://www.boffamiskell.co.nz/project.php?i=dominionroad-cultural-landscape-plan>



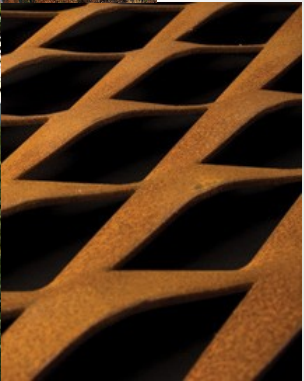
Dominion Road Cultural Landscape — by Boffa Miskell



Dominion Road Cultural Landscape — by Boffa Miskell



Tianjin Qiaoyuan Park — by Turenscope Landscape Architecture



COR-TEN steel mesh



COR-TEN steel mesh



Dominion Road Cultural Landscape — by Boffa Miskell



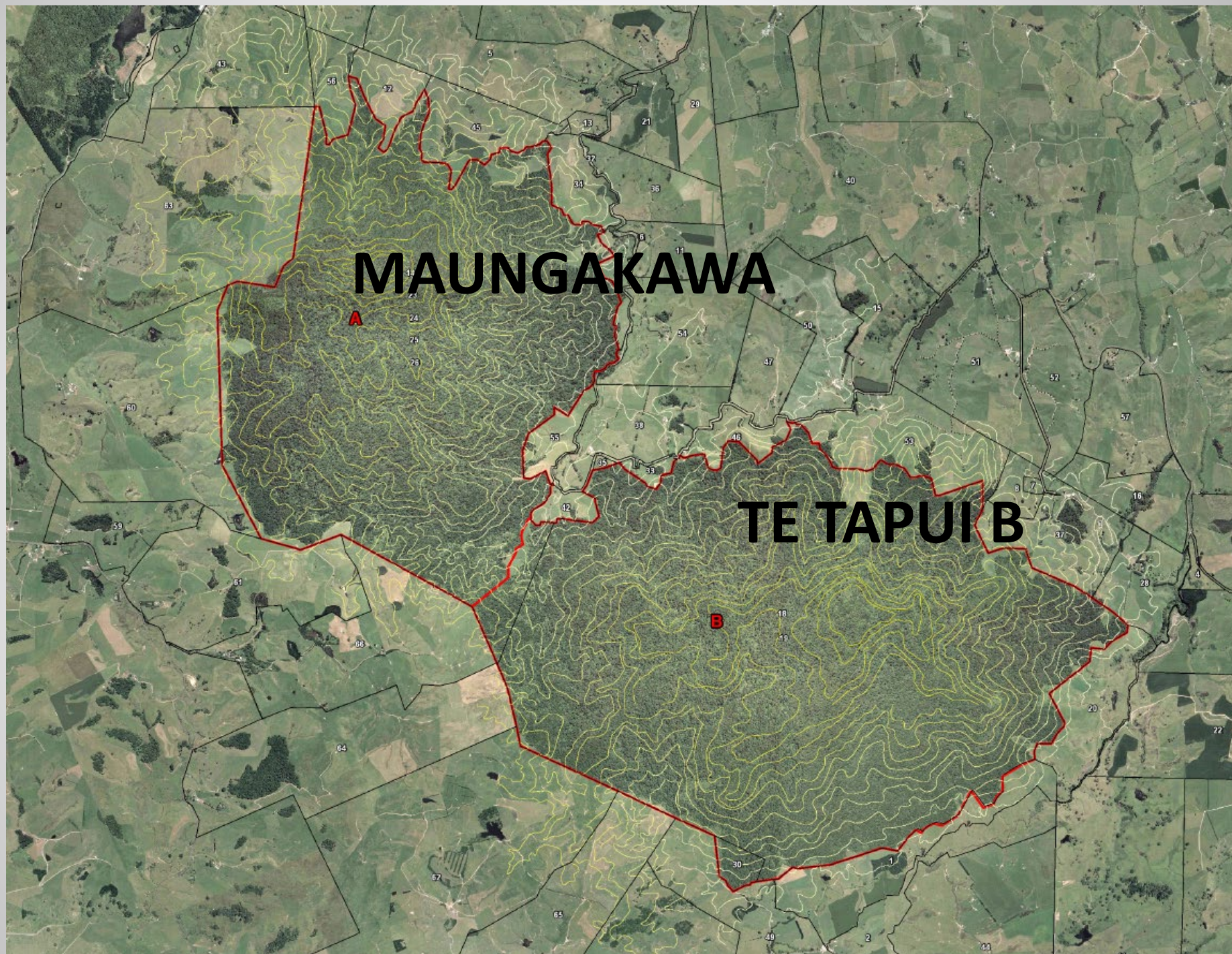
SH 27 Mangawhero Bridge Project

- This is a new project. NZTA are looking at ways to make the Mangawhero Stream Bridge on State Highway 27 safer for everyone, motorists and cyclists. This project is part of the Safe Roads and Roadsides programme that is underway to prevent people from dying or being injured on NZ rural roads.
- A blessing was held on 11 May 2018 attended by Ngāti Hauā, Ngāti Hinerangi and Raukawa to allow geotech investigations to commence. A TWWG has been established consisting of two reps from each iwi. The representatives are Rangitionga Kaukau and Lisa Gardiner.
- A new bridge will be built and the TWWG are invited to name the bridge – Raukawa have proposed the name Hinerauhaua

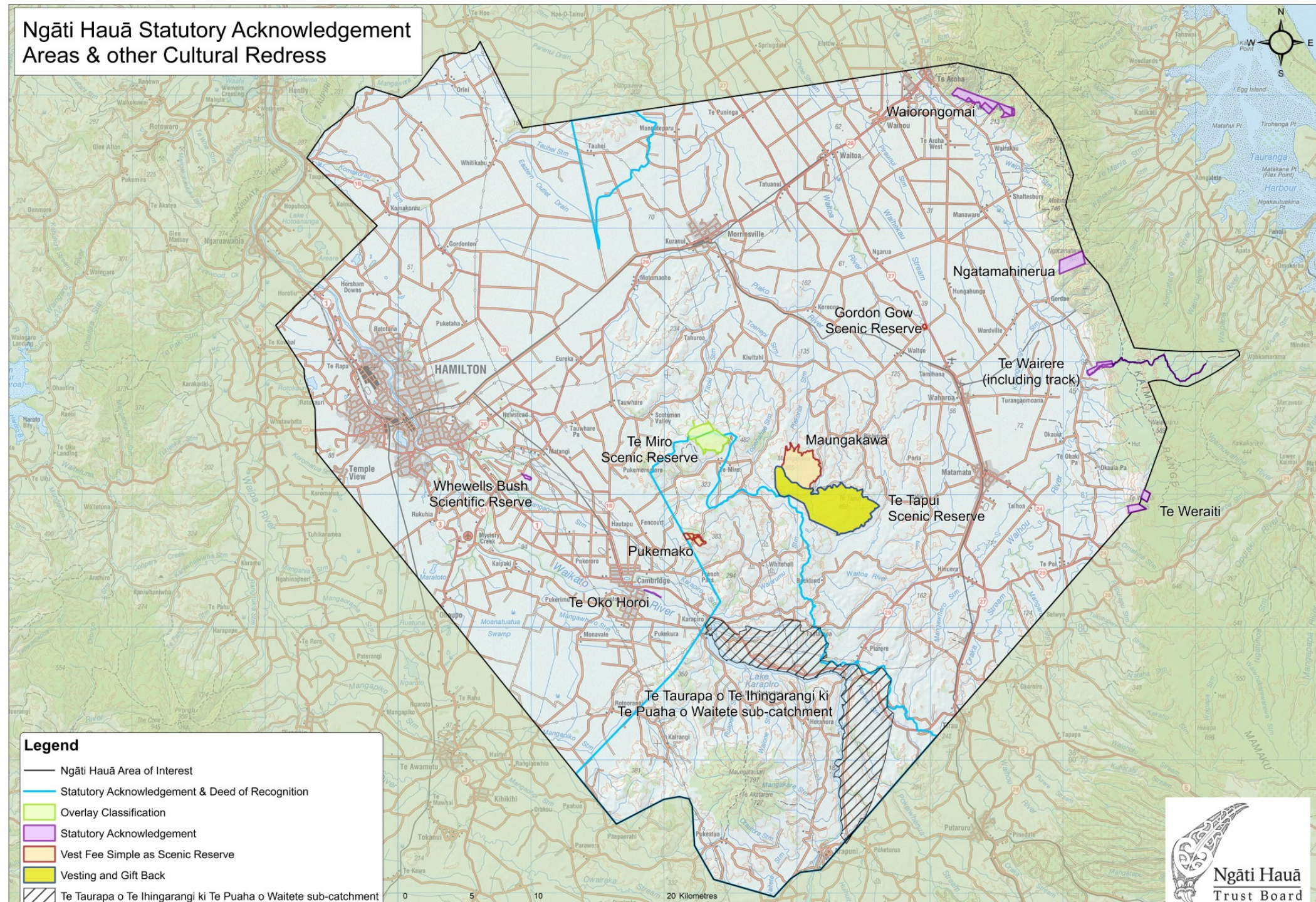


Pest Control - Te Tapui Scenic Reserve & Maungakawa Scenic Reserve

- Te Tapui Scenic Reserve consists of 2, 383 ha and is one of the largest scenic reserves in the North Island.
- For hunting management purposes, Te Tapui was split into two blocks Te Tapui A (north) and Te Tapui B (south).
- On 9 February 2015, 629 hectares of Te Tapui A block (renamed Maungakawa Scenic Reserve) was transferred to the Ngati Haua Iwi Trust under Sec 61 of the Ngati Haua Claims Settlement Act.
- The settlement provides for the integrated management of the reserve with DoC



Ngāti Hauā Statutory Acknowledgement Areas & other Cultural Redress



Pest Control

- No pest control has been undertaken in A or B Block. Our iwi position is 'NO AERIAL 1080'.
- We are in discussions with WRC and Whitehall Group regarding options to address the issue of pest control.
- Current suggested approach from WRC: Split the block in half and run a trial, with the DOC (B block) land aerially treated with 1080. In Maungakawa use the pre-feed approach using the helicopter, then utilise the existing bait station infrastructure or hand laid 1080 with both ground control options in Maungakawa, use Ngati Haua labour to assist in the control.
- Undertake a comparison between the two blocks based on the results achieved and the cost and possibly look at doing some simple acoustic monitoring (recording bird song) pre and post?
- Trustees are currently considering options and will workshop with DoC, Whitehall and WRC early 2019.

Haua Reo Haua Tangata

- Our inaugural Kura Reo was held from 7-10 October 2018 and was a huge success. An average of 145 people attended the Kura Reo over the four days. We are currently reviewing and collating the evaluation surveys and will use this information to plan for our next Kura Reo (dates are yet to be confirmed and are subject to funding).
- The next Waiata with Haua evening is being held on 8th November 2018 at Te Iti o Haua Marae, 5:30pm to 8:30pm
- NHIT submitted to the recent Te Matawai funding round and have secured funding to the value of \$145k to implement Haua Reo Haua Tangata activities during 2018-19



Education

- We are currently in discussions with MoE to secure funding to:
 1. Develop an iwi education strategy
 2. Develop a strategy/framework for engaging with schools
 3. Facilitate workshops



EMPLOYMENT BROKER – Contractor

Waikato Tainui is a leading tribal organisation responsible for developing and implementing initiatives which improve iwi outcomes in the areas of education and training, employment, tribal preservation, marae development, health and well-being, and environmental and resource management.

Waikato Tainui and Ngāti Hauā Iwi Trust have entered into a partnership agreement focused on assisting Ngāti Hauā members into job and career pathways. The position of Employment Broker has been established and expressions of interest are now being sought.

Purpose of position:

The Employment Broker will provide support to Ngāti Hauā marae members that ensures they are capable, confident and ready to work.

The contractor will be responsible for delivering Career Pathway themed workshops, transitioning tribal members into meaningful pathways (jobs) and apprenticeships/cadetships.

Skills and experience required:

- Facilitation experience - delivering to groups.
- Excellent communication, engagement and relationship skills
- Full NZ driver licence
- Ability to work independently and as part of a team
- Awareness of the labour market

To apply visit www.waikatotainuicareers.com

Applications close Friday 2nd November at 5pm